



COVID-19 Protection Guidance in Chinese Comprehensive Hospital

--Experience from BeiJing Chao-Yang Hospital

Dr. Liu Yong-Zhe

Infectious Diseases and Clinical Microbiology



Outline

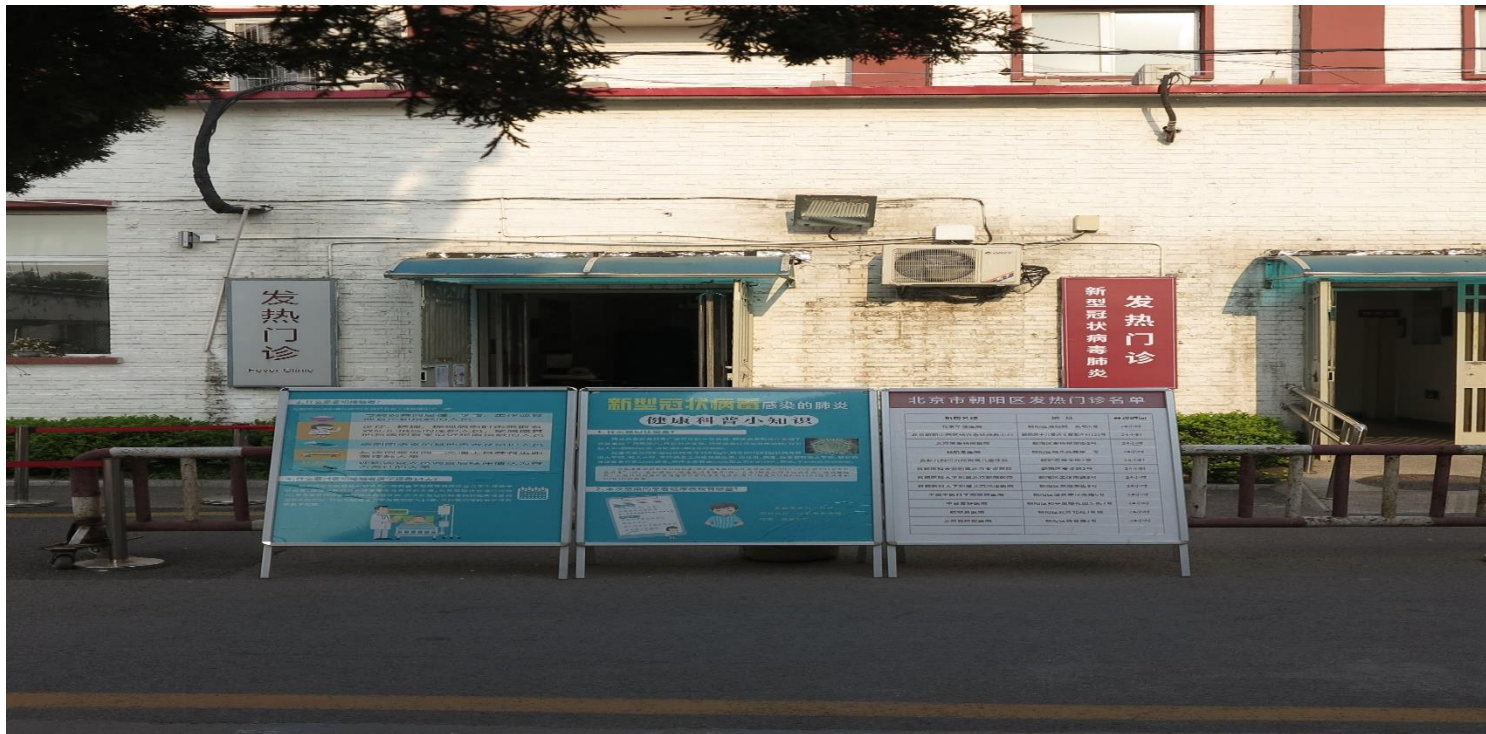
- I. Suspected COVID-19 contaminated area in comprehensive Hospital
- II. Healthcare workers putting on and removing PPE procedure in fever clinic and quarantine wards (video)
- III. Patients protective measures in hospital

Brief Introduction



- Comprehensive Hospital with 1500 beds, 3 million patients per year
- No 3. Teaching Hospital of Capital Medical University
- Top 5 in Respiratory and Critical Care Medicine

Fever Clinic Function



- Seasonal and Epidemic infectious diseases (respiratory tract and diarrhea) surveillance and treatment;
- Bacteria resistance surveillance and Unknown Pathogen detection

Seasonal Flu in 2018-2019



- Influenza like illness (ILI) 50,000 cases per year in fever clinic
- Shortness : Crowd, limited distance,



- I. Suspected COVID-19 contaminated area in comprehensive Hospital



Zones Setup in COVID-19 period

- **Red Zone** : Dangerous ! Fever clinic、 Quarantine wards ,
- **Yellow Zone** : Transitional ! Emergency Room、 Operation waiting room ,
- **Green Zone** : Safe! Internal、 Surgery、 Gynecology、 Pediatrics、 Ophthalmology、 Stomaology、 Dermatology and Others department

Protective Level in red zone



Protective level (PL)-3



PL-2



PL-1



Red Zone



Fever Clinic



Quarantine Zone



Mobile CT Cabin

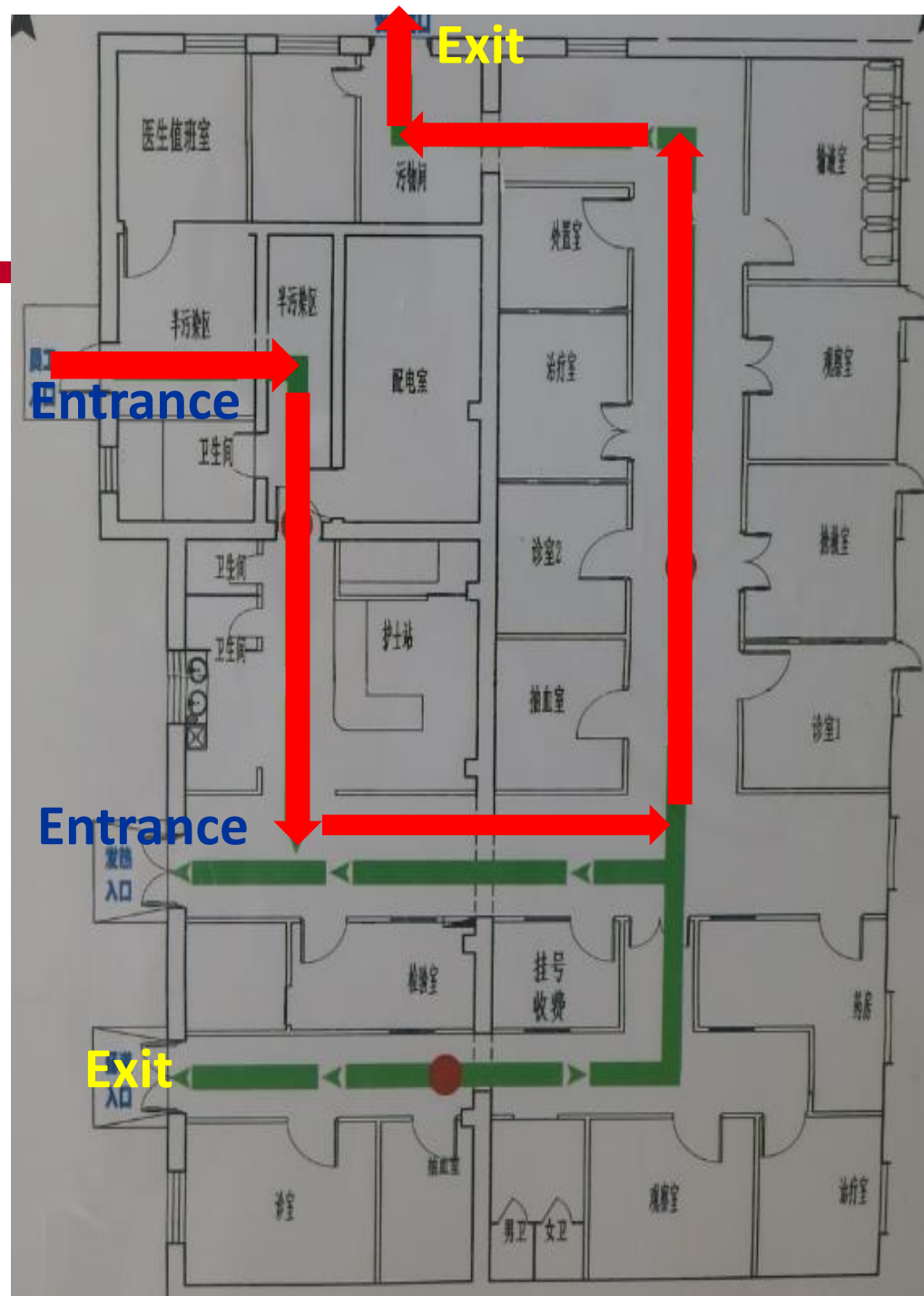


**ID ward
ICU**



Fever Clinic

- Two routes separately for patients and healthcare workers (green and red)
- **Entrance** and **Exit**
- Reception, Consulting room, Nurse Station, Blood test Lab, Pharmacy



Entrance and Exit

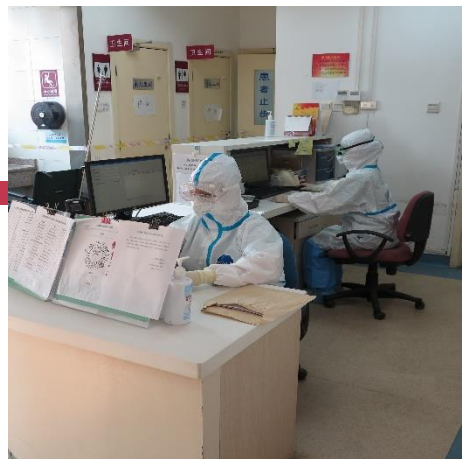


Exit

1. Contaminated Protective suits ;
2. Waste mask and cap

Entrance

Healthcare workers with PPE enter the door (semi-contaminated)



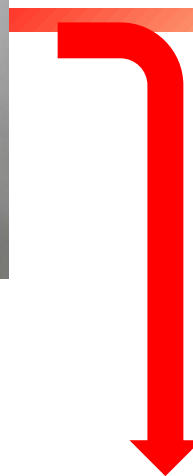
Reception



Consulting room



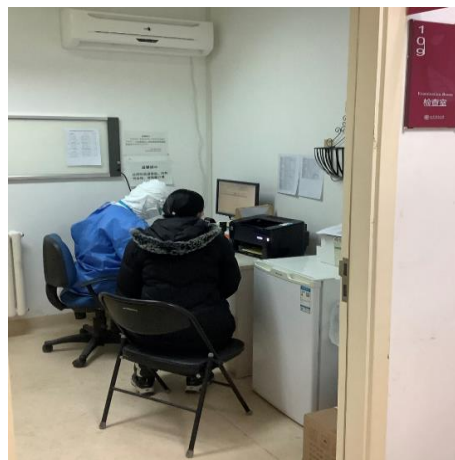
Payment



Blood and swab
Sample collection



CT scan



Consulting room
prescription

Stay-at-Home
Quarantine zone



Protection in treatment and resuscitation



Medical protection in sample management



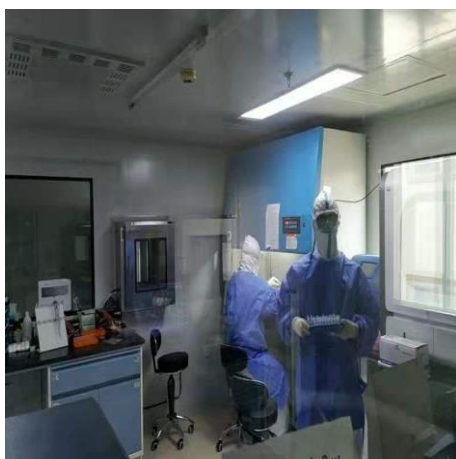
Swab sample storage



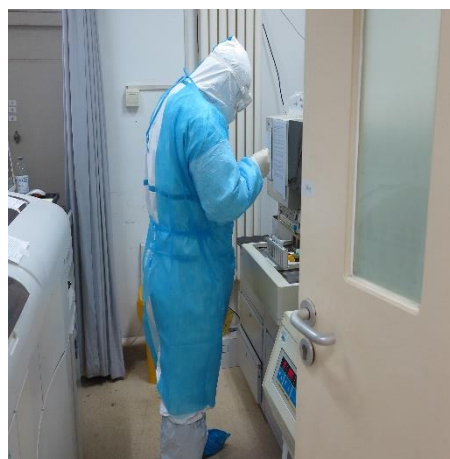
sample transfer



sample receiver in BSL-2 lab



Coronavirus RT-PCR



Blood tests



Isolated CT cabin

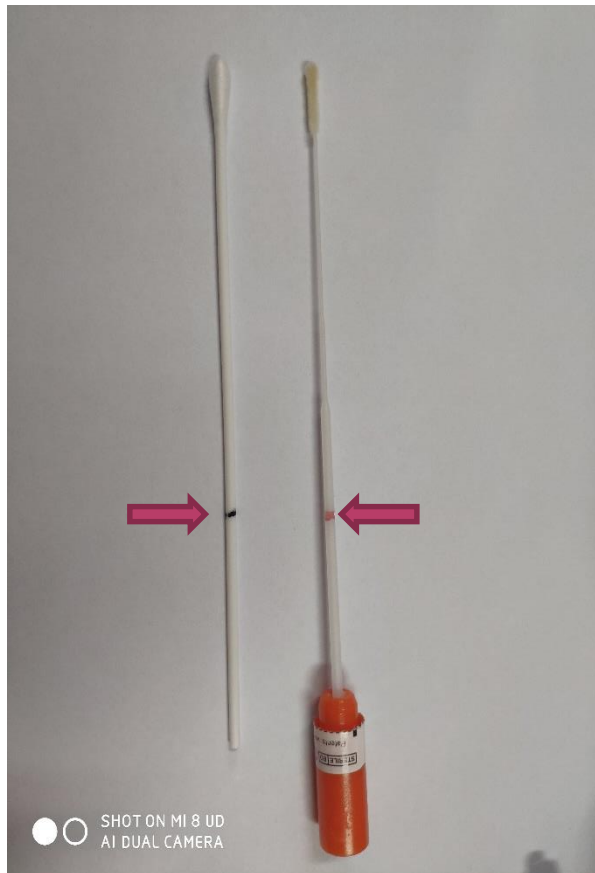


- II. Healthcare workers putting on and removing PPE procedure in fever clinic and quarantine wards

II. Putting on and remove PPE procedure (video)



Sample Collection



nasopharyngeal swab

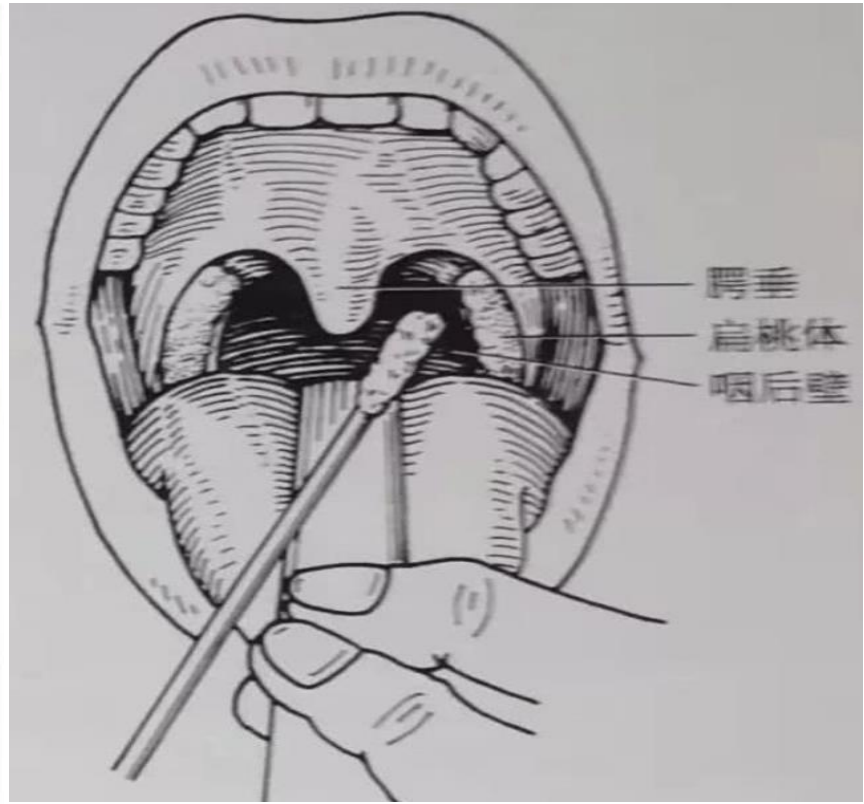


Flu antigen rapid test



sample tube

Pharyngeal swab





- III. Patients protective measures in hospital

COVID-19 suspected cases criteria



- January 2020, patients from WuHan City with
- Fever、 respiratory sypmtoms (cough、 pharyngalgia、 shortness of breath) or cluster pneumonia;
- February- Early March, patients from COVID-19 epidemic provinces or reported regional outbreak;
- Late March up-to-date , patients from COVID-19 epidemic country or overseas traveller with fever or respiratory sypmtoms



- **Personal Protection:** Mask, gloves (optional)
- **Distance:** One patient in a consulting room
- **Order:** keep safety distance and wait in order
- **Self-service:** obtain examination information byself



**Reception
Station**



**Consulting
room**



**Consulting
room**



**Consulting
room**



Self-service Procedure



Vital Signs



App



Printer

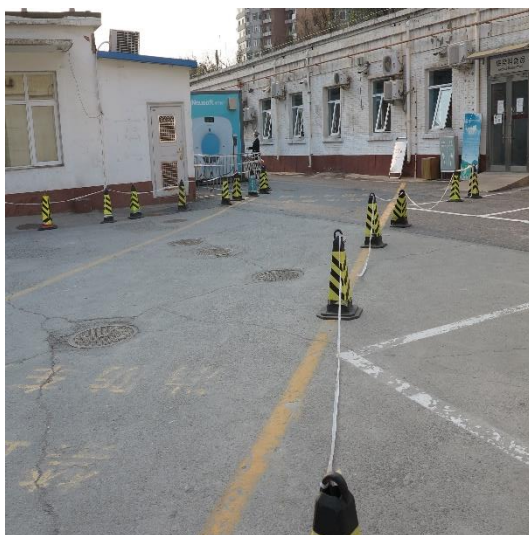


Chest CT



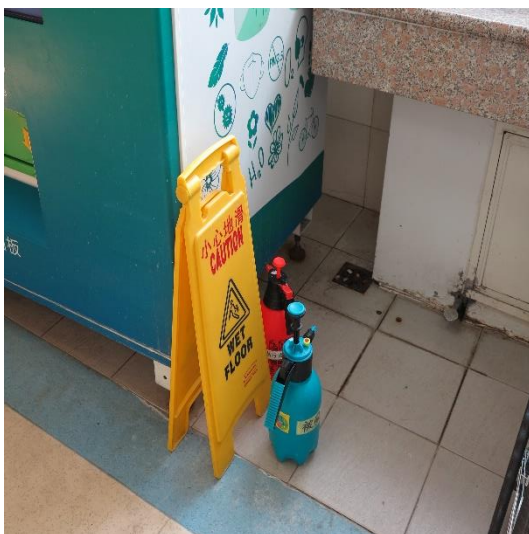
Patients protection

Patients' route special for fever clinic



Security keep the Order

Spray pot for Sterillization



Social worker guide the CT scan



Thank your attention !

I participate in this Webinar as an individual expert and therefore be independent from any organization in my work.